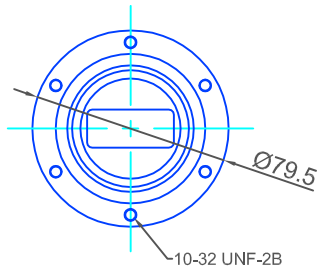


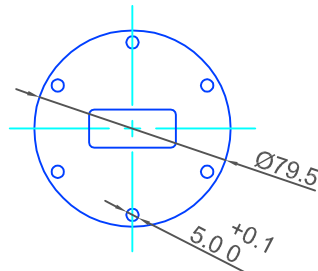
## AMERICAN FLANGES

**14A**  
CHOKE + SEALING GROOVE



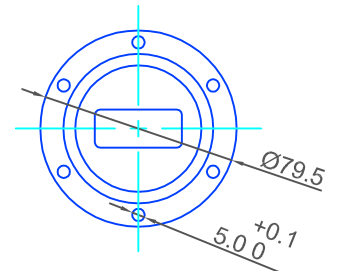
UG-343 B/U  
(MIL-F-3922/60-001)

**14B**  
COVER / PLAIN



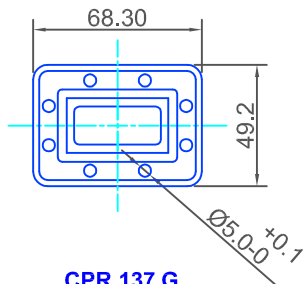
UG-344 /U  
(MIL-F-3922/55-001)

**14Y**  
SEALING GROOVE



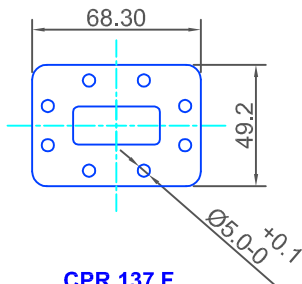
UG-344 /U *Modified*  
(MIL-F-3922/55-001) *Modified*

**14C**  
SEALING GROOVE



CPR 137 G

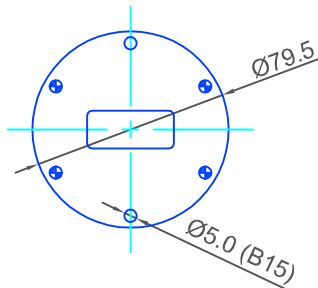
**14D**  
COVER / PLAIN



CPR 137 F

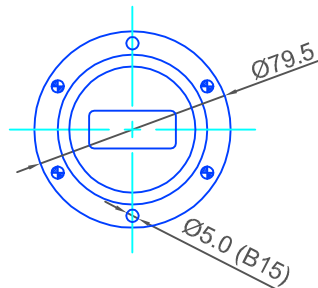
## EUROPEAN FLANGES

**14Q**  
COVER / PLAIN



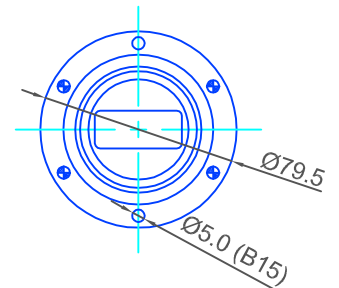
154 IEC-UAR 70

**14R**  
SEALING GROOVE



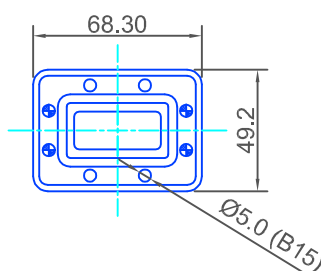
154 IEC-PAR 70

**14W**  
CHOKE + SEALING GROOVE



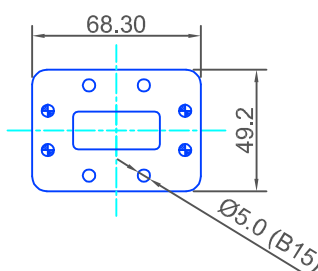
154 IEC-CAR 70

**14H**  
SEALING GROOVE



154 IEC-PDR 70

**14L**  
COVER / PLAIN



154 IEC-UDR 70

WG14  
WR137  
R70